



Stanton Bridge Primary School. Strategic Report: Achievements and Performance

Colour coded percentages:

Green: Above national

Orange: In line with national

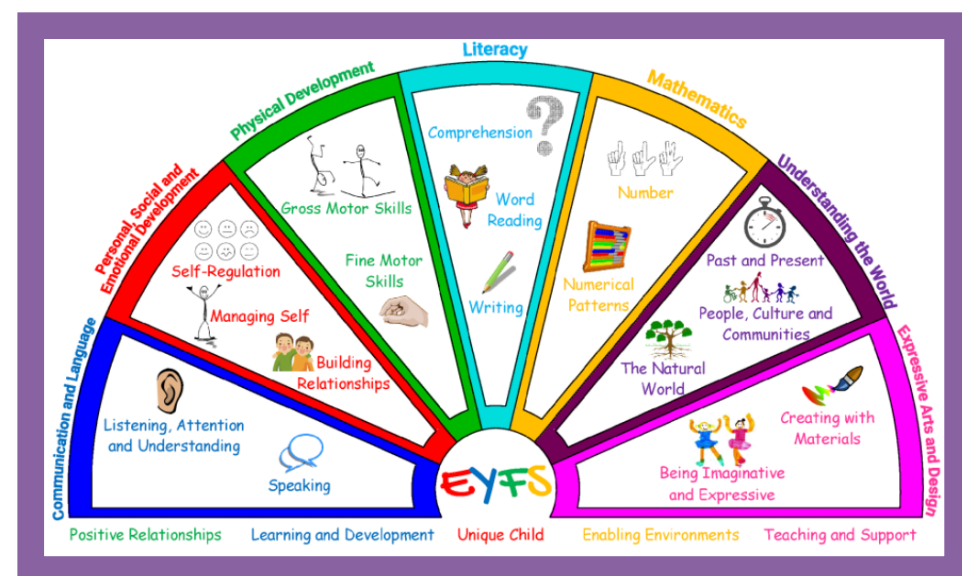
Red: Below national

Note: Figures in brackets are end of year results after removing new arrivals.

Updated: 16/09/25

Early Years Foundation Stage.

Good level of development		
	School	National
2025	73%	69%
2024	78%	67.7%
2023	83%	67.2%
2022	71%	65%
2021	52%	Not published due to Covid
2020	75%	
2019	72%	71.8%
2018	72.2%	71.5%
2017	70.9%	70.7%



Specific areas: Literacy						
	Literacy		Reading		Writing	
	School	National	School	National	School	National
2025			77%	76.5%	77%	71.8%
2024	80%	70%	80%	76.3%	80%	66.8
2023	88%	69%	88%	69%	88%	69%
2022	73%	68%	73%	74%	73%	69%
2021	54%		54%		54%	
2020	63%		63%		63%	
2019	75.9% (78.8%)	73.4%	75.9%	76.9%	75.9%	73.7%
2018	74.5%	73.3%	85.2%	77%	74.1%	73.7%
2017	74.5%	72.8%	85.5%	77%	84.5%	73.3%



Specific areas: Mathematics

Specific areas: Mathematics								
	Mathematics		Number		Shape and Space		Numerical Patterns (2022+)	
	School	National	School	National	School	National	School	National
2025			77%	79.3%			77%	78.7%
2024	82%	77.1%	82%	78.7%			82%	78.3%
2023	83.7%		83.7%				83.7%	
2022	75%	75%	75%	77%			75%	77%
2021	54%		54%		54%			
2020	75%		75%		75%			
2019	75.9% (78.8%)	78.5%	77.8%	79.8%	75.9%	81.5%		
2018	80%	78.3%	81.5%	79.6%	85.2%	81.7%		
2017	80%	77.9%	81.8%	79.2%	87.3%	81.6%		



Specific areas: Understanding the World

	Understanding the World		Past and Present (2022+)		People & Communities People, Culture and Communities (2022+)		The World The Natural World (2022+)		Technology	
	School	National	School	National	School	National	School	National	School	National
2025			72%	82%	72%	81.8%	72%	85.1%		
2024	80%	80%	80%	81.6%	80%	84.9%	80%	84.9%		
2023	88%		88%		88%		88%			
2022	82%	79%	82%	81%	82%	81%	84%	85%		
2021	74%				52%		52%		74%	
2020	83%				83%		81%		87%	93.1%
2019	77.8% (80.8%)	83.9%			77.8%	85.6%	77.8%	85.5%	87%	
2018	87.3%	84%			87%	85.9%	87%	85.8%	100%	93.1%
2017	87.3%	83.6%			87.3%	85.7%	87.3%	85.7%	100%	92.7%

Specific areas: Personal. Social and Emotional.									
	Personal, Social & Emotional		Self-confidence & Awareness Self-regulation (2022+)		Managing Feelings & Behaviour Managing self (2022+)		Making Relationships Build Relationships (2022+)		
	School	National	School	National	School	National	School	National	
2025			77%	84.8%	77%	86.9%	77%	88%	
2024	93%	82.9%	93%	84.7%	93%	86.8%	93%	87.9%	
2023	91%		91%		91%		91%		
2022	94%	83%	94%	85%	94%	87%	94%	88%	
2021	57%		54%		56%		56%		
2020	87%		81%		85%		87%		
2019	87% (90.3%)	84.8%	90.7%	88.5%	90.7%	88.5%	88.9%	89.2%	
2018	87.3%	85.2	90.7%	88.9%	92.6%	87.9%	92.6%	89.7%	
2017	87.3%	85.2%	87.3%	89.1%	89.1%	88%	90.9%	89.7%	



Specific areas: Expressive Arts and Design

Specific areas: Expressive Arts and Design						
	Expressive Arts and Design		Exploring & using media Creating with materials (2022+)		Being Imaginative and expressive (2022+)	
	School	National	School	National	School	National
2025			77%	87.3%	77%	87%
2024	83%	84.7%	83%	87%	83%	86.6%
2023	91%	85%	91%	85%	91%	85%
2022	100%	84.5%	100%	87%	100%	86%
2021	54%		54%		65%	
2020	85%		85%		85%	
2019	83.3% (86.5%)	87.2%	83.3%	88.9%	87%	88.6%
2018	89.1%	87.2%	92.6%	89%	90.7%	88.7%
2017	89.1%		91.0%		89.1%	



Prime Areas: Communication and Language								
	Literacy		Listening, Attention & Understanding (2022+)		Understanding		Speaking	
	School	National	School	National	School	National	School	National
2025			72%	81.7%			72%	82.7%
2024	82%	79.3%	82%	81.6%			82%	82.3%
2023	88%		88%				88%	
2022	82%	79%	84%	82%			82%	82%
2021	52%		52%		50%		52%	
2020	60%		75%		65%		65%	
2019		82.2%		85.9%		85.7%		85.4%
2018		82.4%		86.3%		86%		85.6%
2017		82%		86.2%		85.9%		85.4%



Key Stage 2.

[illegible]

End of Key Stage 2 - Attainment (Greater Depth)															
	Reading				Writing				Maths				Grammar, Punctuation and Spelling		
	School	National	LA		School	National	LA		School	National	LA		School	National	LA
2025	33%	33.4%	30%		13%	12.8%	7%		38%	26.3%	24.4%		48%	29.6%	31.1%
2024	20%	28.5%	24.2%		3.5%	12.9%	7.3%		14%	23.9%	21.6%		30%	32%	32.6%
2023	41% (42%)	29%			9%	13%			38% (39%)	24%			60% (61%)		
2022	19% (21%)	28%	24%		0%	13%	7%		19% (21%)	22%	20%		32% (36%)	28%	29%
2021	21.8%	28.1%			5.5%	15.7%			29.1%	21.4%					
2020	36%				16%				47%				53%		
2019	42%	27%			7%	20%			44%	27%			53%	36%	
2018	41%	28%			9%	20%			56%	24%			55%	34%	
2017															



End of Key Stage 2 - Progress (Expected +)								
	Reading			Writing			Maths	
	School	National		School	National		School	National
2025								
2024								
2023	3.45	0.00		0.96	0.04		4.23	0.04
2022	0.81	0.04		0.98	0.05		1.07	0.04
2021								
2020								
2019								
2018	2.85			1.77			6.79	
2017								

End of Key Stage 2 - Reading, Writing, Maths Combined			
	School	National	LA
2025	80%	62.2%	59.7%
2024	55%	60.6%	
2023	72%	59%	
2022	59%	59%	
2021			
2020			
2019			
2018			
2017			

