



Stanton Bridge Primary School. Strategic Report: Achievements and Performance

Colour coded percentages:

Green: Above national

Orange: In line with national

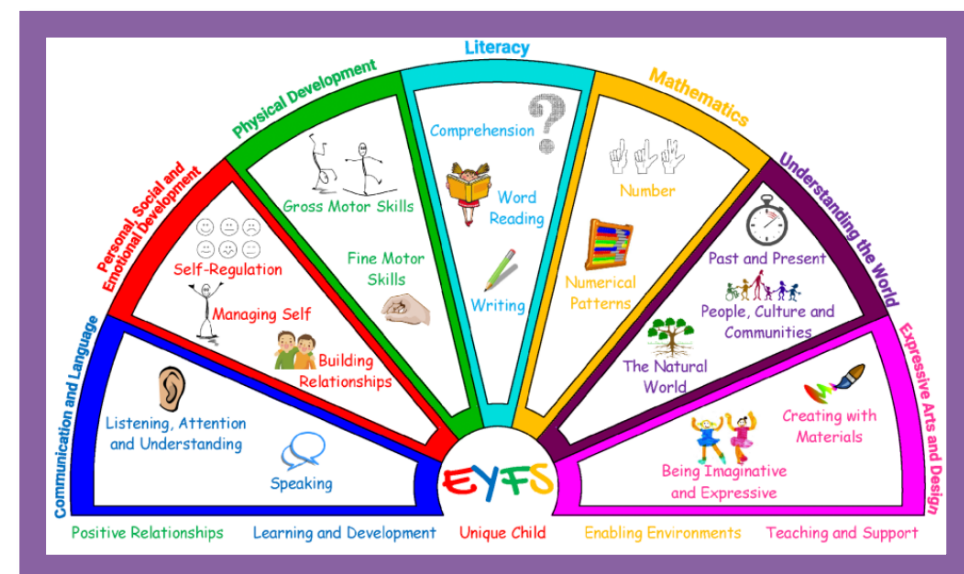
Red: Below national

Note: Figures in brackets are end of year results after removing new arrivals.

Updated: 15/10/24

Early Years Foundation Stage.

Good level of development		
	School	National
2024	78%	67.7%
2023	83%	67.2%
2022	71%	65%
2021	52%	Not published due to Covid
2020	75%	
2019	72%	71.8%
2018	72.2%	71.5%
2017	70.9%	70.7%



Specific areas: Literacy								
	Literacy			Reading			Writing	
	School	National		School	National		School	National
2024	80%	70%		80%	76.3%		80%	66.8%
2023	88%	69%		88%	69%		88%	69%
2022	73%	68%		73%	74%		73%	69%
2021	54%			54%			54%	
2020	63%			63%			63%	
2019	75.9% (78.8%)	73.4%		75.9%	76.9%		75.9%	73.7%
2018	74.5%	73.3%		85.2%	77%		74.1%	73.7%
2017	74.5%	72.8%		85.5%	77%		84.5%	73.3%



Specific areas: Mathematics

	Mathematics		Number		Shape and Space		Numerical Patterns (2022+)	
	School	National	School	National	School	National	School	National
2024	82%	77.1%	82%	78.7%			82%	78.3%
2023	83.7%	77%	83.7%	77%			83.7%	77%
2022	75%	75%	75%	77%			75%	77%
2021	54%		54%		54%			
2020	75%		75%		75%			
2019	75.9% (78.8%)	78.5%	77.8%	79.8%	75.9%	81.5%		
2018	80%	78.3%	81.5%	79.6%	85.2%	81.7%		
2017	80%	77.9%	81.8%	79.2%	87.3%	81.6%		





Specific areas: Understanding the World

Specific areas: Understanding the World													
	Understanding the World		Past and Present (2022+)			People & Communities People, Culture and Communities (2022+)			The World The Natural World (2022+)			Technology	
	School	National	School	National		School	National		School	National		School	National
2024	80%	80%	80%	81.6%		80%	81.4%		80%	84.9%			
2023	88%	80%	88%	80%		88%	80%		88%	80%			
2022	82%	79%	82%	81%		82%	81%		84%	85%			
2021	74%					52%			52%			74%	
2020	83%					83%			81%			87%	93.1%
2019	77.8% (80.8%)	83.9%				77.8%	85.6%		77.8%	85.5%		87%	
2018	87.3%	84%				87%	85.9%		87%	85.8%		100%	93.1%
2017	87.3%	83.6%				87.3%	85.7%		87.3%	85.7%		100%	92.7%

Specific areas: Personal. Social and Emotional.									
	Personal, Social & Emotional		Self-confidence & Awareness Self-regulation (2022+)		Managing Feelings & Behaviour Managing self (2022+)		Making Relationships Build Relationships (2022+)		
	School	National	School	National	School	National	School	National	
2024	93%	82.9%	93%	84.7%	93%	86.8%	93%	87.9%	
2023	91%	83%	91%	83%	91%	83%	91%	83%	
2022	94%	83%	94%	85%	94%	87%	94%	88%	
2021	57%		54%		56%		56%		
2020	87%		81%		85%		87%		
2019	87% (90.3%)	84.8%	90.7%	88.5%	90.7%	88.5%	88.9%	89.2%	
2018	87.3%	85.2	90.7%	88.9%	92.6%	87.9%	92.6%	89.7%	
2017	87.3%	85.2%	87.3%	89.1%	89.1%	88%	90.9%	89.7%	





Specific areas: Expressive Arts and Design

Specific areas: Expressive Arts and Design						
	Expressive Arts and Design		Exploring & using media Creating with materials (2022+)		Being Imaginative and expressive (2022+)	
	School	National	School	National	School	National
2024	83%	84.7%	83%	87%	83%	86.6%
2023	91%	85%	91%	85%	91%	85%
2022	100%	84.5%	100%	87%	100%	86%
2021	54%		54%		65%	
2020	85%		85%		85%	
2019	83.3% (86.5%)	87.2%	83.3%	88.9%	87%	88.6%
2018	89.1%	87.2%	92.6%	89%	90.7%	88.7%
2017	89.1%		91.0%		89.1%	



Prime Areas: Communication and Language								
	Communication and Language		Listening, Attention & Understanding (2022+)		Understanding		Speaking	
	School	National	School	National	School	National	School	National
2024	82%	79.3%	82%	81.6%			82%	82.3%
2023	88%	79%	88%	79%			88%	79%
2022	82%	79%	84%	82%			82%	82%
2021	52%		52%		50%		52%	
2020	60%		75%		65%		65%	
2019		82.2%		85.9%		85.7%		85.4%
2018		82.4%		86.3%		86%		85.6%
2017		82%		86.2%		85.9%		85.4%

Key Stage 1.

Phonics Screening: Year 1

	School	National
2024	83%	80.3%
2023	87%	79%
2022	78% (83%)	75%
2021		
2020	86%	
2019	85%	82%
2018	92%	82%
2017	85%	81%

Phonics Screening: Year 2

	School	National
2024	93%	91%
2023	77%	85%
2022	92% (100%)	87%
2021	86% (92%)	
2020	86%	
2019	95%	91%
2018	86%	92%
2017	95%	92%



End of Key Stage I - Attainment (Level 2C+/Expected standard +)

	Reading			Writing			Maths	
	School	National		School	National		School	National
2023	81%	69%		75%	61%		82%	72%
2022	76%	68%		72%	59%		80%	70%
2021	59% (82%)			65% (71%)			76% (82%)	
2020	82%			78%			84%	
2019	82%	75%		82%	69%		84%	76%
2018	78%	75%		78%	70%		84%	76%
2017	82%	76%		79%	68%		88%	75%

End of Key Stage I - Attainment (Greater Depth)

	Reading			Writing			Maths	
	School	National		School	National		School	National
2023	16%	19%		16%	8%		21%	16%
2022	14%	18%		10%	8%		14%	15%
2021								
2020	20%			16%			22%	
2019	19%	25%		21%	15%		21%	22%
2018								
2017								

Key Stage 2.

[illegible]

[illegible]



End of Key Stage 2 - Progress (Expected +)

	Reading			Writing			Maths	
	School	National		School	National		School	National
2024								
2023	3.45	0.00		0.96	0.04		4.23	0.04
2022	0.81	0.04		0.98	0.05		1.07	0.04
2021								
2020								
2019								
2018	2.85			1.77			6.79	
2017								

End of Key Stage 2 - Reading, Writing, Maths Combined		
	School	National
2024	55%	60.6%
2023	72%	59%
2022	59%	59%
2021		
2020		
2019		
2018		
2017		

