



Stanton Bridge Primary School. Strategic Report: Achievements and Performance

Colour coded percentages:

Green: Above national

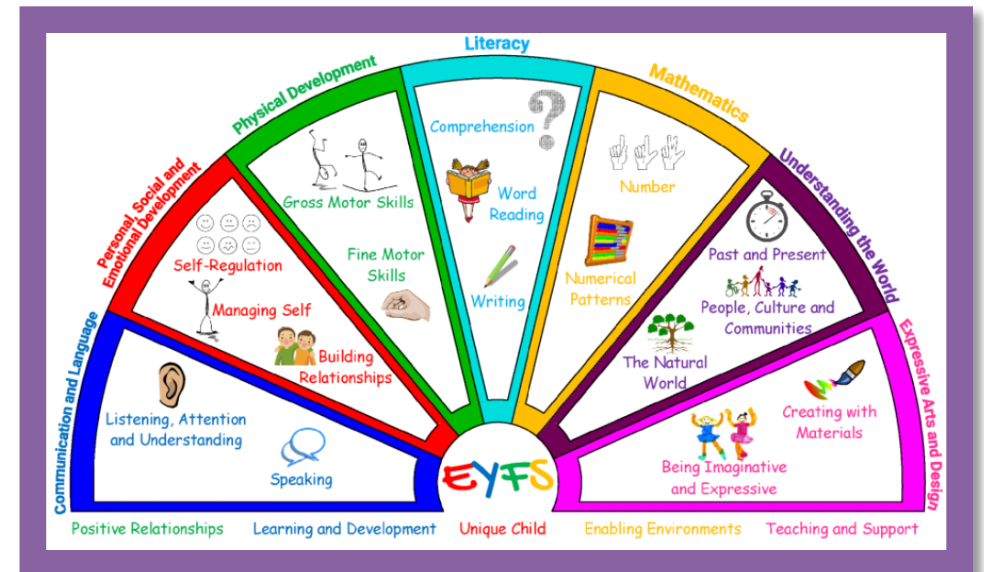
Orange: In line with national

Red: Below national

Note: Figures in brackets are end of year results after removing new arrivals.

Early Years Foundation Stage.

Good level of development		
	School	National
2023	83%	
2022	71%	65%
2021	52%	Not published due to Covid
2020	75%	
2019	72%	71.8%
2018	72.2%	71.5%
2017	70.9%	70.7%



Specific areas: Literacy						
	Literacy		Reading		Writing	
	School	National	School	National	School	National
2023	88%		88%		88%	
2022	73%	68%	73%	74%	73%	69%
2021	54%		54%		54%	
2020	63%		63%		63%	
2019	75.9% (78.8%)	73.4%	75.9%	76.9%	75.9%	73.7%
2018	74.5%	73.3%	85.2%	77%	74.1%	73.7%
2017	74.5%	72.8%	85.5%	77%	84.5%	73.3%



Specific areas: Mathematics

	Mathematics		Number		Shape and Space		Numerical Patterns (2022+)	
	School	National	School	National	School	National	School	National
2023	83.7%		83.7%				83.7%	
2022	75%	75%	75%	77%			75%	77%
2021	54%		54%		54%			
2020	75%		75%		75%			
2019	75.9% (78.8%)	78.5%	77.8%	79.8%	75.9%	81.5%		
2018	80%	78.3%	81.5%	79.6%	85.2%	81.7%		
2017	80%	77.9%	81.8%	79.2%	87.3%	81.6%		



Specific areas: Understanding the World

	Understanding the World		Past and Present (2022+)		People & Communities People, Culture and Communities (2022+)		The World The Natural World (2022+)		Technology	
	School	National	School	National	School	National	School	National	School	National
2023	88%		88%		88%		88%			
2022	82%	79%	82%	81%	82%	81%	84%	85%		
2021	74%				52%		52%		74%	
2020	83%				83%		81%		87%	93.1%
2019	77.8% (80.8%)	83.9%			77.8%	85.6%	77.8%	85.5%	87%	
2018	87.3%	84%			87%	85.9%	87%	85.8%	100%	93.1%
2017	87.3%	83.6%			87.3%	85.7%	87.3%	85.7%	100%	92.7%



Specific areas: Personal. Social and Emotional.

	Personal, Social & Emotional		Self-confidence & Awareness <i>Self-regulation (2022+)</i>		Managing Feelings & Behaviour <i>Managing self (2022+)</i>		Making Relationships <i>Build Relationships (2022+)</i>	
	School	National	School	National	School	National	School	National
2023	90.7%		91%		91%		91%	
2022	94%	83%	94%	85%	94%	87%	94%	88%
2021	57%		54%		56%		56%	
2020	87%		81%		85%		87%	
2019	87% (90.3%)	84.8%	90.7%	88.5%	90.7%	88.5%	88.9%	89.2%
2018	87.3%	85.2	90.7%	88.9%	92.6%	87.9%	92.6%	89.7%
2017	87.3%	85.2%	87.3%	89.1%	89.1%	88%	90.9%	89.7%

Specific areas: Expressive Arts and Design

	Expressive Arts and Design		Exploring & using media <i>Creating with materials (2022+)</i>		Being Imaginative <i>and expressive (2022+)</i>	
	School	National	School	National	School	National
2023	91%		91%		91%	
2022	100%	84.5%	100%	87%	100%	86%
2021	54%		54%		65%	
2020	85%		85%		85%	
2019	83.3% (86.5%)	87.2%	83.3%	88.9%	87%	88.6%
2018	89.1%	87.2%	92.6%	89%	90.7%	88.7%
2017	89.1%		91.0%		89.1%	



Prime Areas: Communication and Language

	Literacy		Listening, Attention & Understanding (2022+)		Understanding		Speaking	
	School	National	School	National	School	National	School	National
2023	88%	%	88%	%			88%	
2022	82%	79%	84%	82%			82%	82%
2021	52%		52%		50%		52%	
2020	60%		75%		65%		65%	
2019		82.2%		85.9%		85.7%		85.4%
2018		82.4%		86.3%		86%		85.6%
2017		82%		86.2%		85.9%		85.4%



Key Stage 1.

Phonics Screening: Year 1		
	School	National
2023		
2022	78% (83%)	75%
2021		
2020	86%	
2019	85%	82%
2018	92%	82%
2017	85%	81%

Phonics Screening: Year 2		
	School	National
2023		
2022	92% (100%)	87%
2021	86% (92%)	
2020	86%	
2019	95%	91%
2018	86%	92%
2017	95%	92%



End of Key Stage 1 - Attainment (Level 2C+/Expected standard +)

	Reading		Writing		Maths	
	School	National	School	National	School	National
2023	81%		75%		82%	
2022	76%	68%	72%	59%	80%	70%
2021	59% (82%)		65% (71%)		76% (82%)	
2020	82%		78%		84%	
2019	82%	75%	82%	69%	84%	76%
2018	78%	75%	78%	70%	84%	76%
2017	82%	76%	79%	68%	88%	75%

End of Key Stage 1 - Attainment (Greater Depth)

	Reading		Writing		Maths	
	School	National	School	National	School	National
2023						
2022	14%	18%	10%	8%	14%	15%
2021						
2020	20%		16%		22%	
2019	19%	25%	21%	15%	21%	22%
2018						
2017						

End of Key Stage 2 - Attainment (Greater Depth)

	Reading			Writing			Maths			Grammar, Punctuation and Spelling		
	School	National	LA	School	National	LA	School	National	LA	School	National	LA
2023	41% (42%)			9%			38% (39%)			60% (61%)		
2022	19% (21%)	28%	24%	0%	13%	7%	19% (21%)	22%	20%	32% (36%)	28%	29%
2021	21.8%	28.1%		5.5%	15.7%		29.1%	21.4%				
2020	36%			16%			47%			53%		
2019	42%	27%		7%	20%		44%	27%		53%	36%	
2018	41%	28%		9%	20%		56%	24%		55%	34%	
2017												



End of Key Stage 2 - Progress (Expected +)						
	Reading		Writing		Maths	
	School		School	National	School	National
2023						
2022	97%		97%		98%	
2021	94%		98%		98%	
2020						
2019						
2018	2.85		1.77		6.79	
2017						

End of Key Stage 2 - Reading, Writing, Maths Combined		
	School	National
2023	71%	59%
2022		
2021		
2020		
2019		
2018		
2017		

