



**South Warwickshire
University**
NHS Foundation Trust

Coventry Family Health & Lifestyle Services
School Nursing
Family Health Division
Moat House Leisure & Neighbourhood Centre
Winston Avenue
Coventry
CV2 1EA

Telephone: 01926 495321 extension 7494
Text Parent Line: 07507329114
swg-tr.contactschoolnursescoventry@nhs.net

Dear Parent/Carer

National Child Measurement Programme for Reception & Year 6 Children

Every year in England, school children in Reception and Year 6 have their height and weight checked at school as part of the National Child Measurement Programme. Height and weight measurements are used to calculate weight status. We collect this information to build a picture of how children are growing, to help plan better health and leisure services for families.

Your child's class will take part in this year's programme. The programme will be delivered safely, in line with the school and local authorities' safety control measures and national guidance for schools and healthcare. A trained health care professional will carry out the checks. Children are measured fully clothed, except for their coats and shoes and year 6 children are measured in a private space away from other pupils.

The School Nursing Team will be adhering to Government and NHS Guidelines whilst working within schools. This will include robust hand hygiene; cleaning arrangements for the measuring equipment and environment used and a risk assessment being completed.

Maintaining the well-being of children in the NCMP

The well-being of children and families is very important. Measurements are conducted sensitively, and year 6 children are measured in a private space away from other pupils. Research is ongoing to ensure this continues to be done in a supportive way.

Individual results are not shared with your child or their school. The weight and height information is shared only with you, via a parent feedback letter or telephone call. It is your choice to share or not share the information with your child.

If you are concerned about your child's growth, weight, body image or eating patterns, seek further support from a school nurse or GP.

Withdrawing your child from the National Child Measurement Programme

If you are happy for your child to be measured, you do not need to do anything.

If you do not want your child's height and weight to be checked, or your child has a medical condition that affects their height or weight please let us know using the contact details provided below:

You can either call the School Nursing team on 01926 495321 EXT: 7494 or send an email to swg-tr.contactschoolnursescoventry@nhs.net, stating your child's name, date of birth and school. We require you to do this by Tuesday 10th February 2026.

Children will not be made to take part on the day if they do not want to.

The information we collect and what it is used for is listed below:

Your child's data

- your child's height, weight, date of measurement, sex and date of birth are used to calculate your child's weight category (also known as body mass index, or BMI)
- your child's name, date of birth and NHS Number are used to link your child's measurements in Reception and Year 6.

Other data sets held by NHS England and Department of Health and Social Care (DHSC) may also be linked to allow information from health and education records to be added, where lawful to do so. This helps understand how and why the weight of children is changing, how this affects children's health and education and how the care children receive can be improved. These other data sets may include your child's health data relating to:

- their birth
- hospital care (including time in hospital and out-patient appointments and diagnosis of medical conditions)
- mental health
- social care
- primary care (including all healthcare outside of hospital, such as GP and dental appointments)

- public health (including data relating to preventing ill health, such as immunisation records)
- records for when and the reason why people pass away
- medical conditions, such as cancer and diabetes
- health, lifestyle and wellbeing surveys that your child has participated in

Your child's ethnicity and address are used to help understand some of the reasons for the difference and changes in child weight across England.

How the data is used

All the data collected is also used for research and planning to improve health, care and services.

All this information is treated confidentially and held securely. No individual measurements will be given to school staff or other children.

The information collected from all schools in the area will be gathered and held securely by South Warwickshire University NHS Foundation Trust. We will store your child's information as part of the local child health record on the NHS's child health information database and share it with the child's GP.

We will send all the information collected about your child to NHS England. NHS England is responsible for collecting data and information about health and care so that it can be used to monitor and improve the care provided to people across England.

The information collected about your child will also be shared by NHS England with the Office for Health Improvement and Disparities (OHID) which is part of DHSC but in a de-personalised form only. This means OHID will not be able to identify your child.

Both NHS England and OHID will use the information from the NCMP to better understand numbers and trends in child weight and BMI. This helps to plan services to support healthy lifestyles in your area. No information will ever be published by NHS England or OHID that identifies your child. NHS England uses the data to produce [National Child Measurement Programme statistics reports](#) showing trends at national and local level.

De-personalised information from the NCMP may also be shared by NHS England with other organisations, such as universities. This is to help improve health, care and services through research and planning. This information cannot be used to identify your child. NHS England

only ever shares information for research through formal assurance and approvals processes, seeking advice from experts as necessary.

Further information

- You can find further information about the NCMP at [The National Child Measurement Programme NHS webpage](https://www.nhs.uk/live-well/healthy-weight/childrens-weight/national-child-measurement-programme/). <https://www.nhs.uk/live-well/healthy-weight/childrens-weight/national-child-measurement-programme/>
- You can find information and fun ideas to help your kids stay healthy at the NHS Better Health: healthier families webpage [Easy ways to eat well and move more](https://www.nhs.uk/healthier-families/). <https://www.nhs.uk/healthier-families/>
- Another way to help maintain a balanced diet and physical activity for your family is the NHS Healthy Steps email programme. Sign up for the 8-week Healthy Steps emails and you will be sent lots of low-cost easy tips, fun games, healthy swaps and tasty recipes on a budget. You can sign up to NHS [Healthy Steps - Step this way](https://healthysteps.betterhealth-healthierfamilies.co.uk/signup) webpage or scan the QR code. <https://healthysteps.betterhealth-healthierfamilies.co.uk/signup>



You can find information about how NHS England and DHSC collect and use information at:

- NHS England's [How we look after your health and care information](https://digital.nhs.uk/data-and-information/keeping-data-safe-and-benefitting-the-public/how-we-look-after-your-health-and-care-information) webpage – <https://digital.nhs.uk/data-and-information/keeping-data-safe-and-benefitting-the-public/how-we-look-after-your-health-and-care-information>
- the DHSC [Personal information charter](https://www.gov.uk/government/organisations/department-of-health-and-social-care/about/personal-information-charter) webpage <https://www.gov.uk/government/organisations/department-of-health-and-social-care/about/personal-information-charter>

You can find information about the organisations NHS England has shared information from the NCMP at NHS England's [National Child Measurement Programme](https://digital.nhs.uk/services/national-child-measurement-programme/) webpage. <https://digital.nhs.uk/services/national-child-measurement-programme/>

Yours sincerely

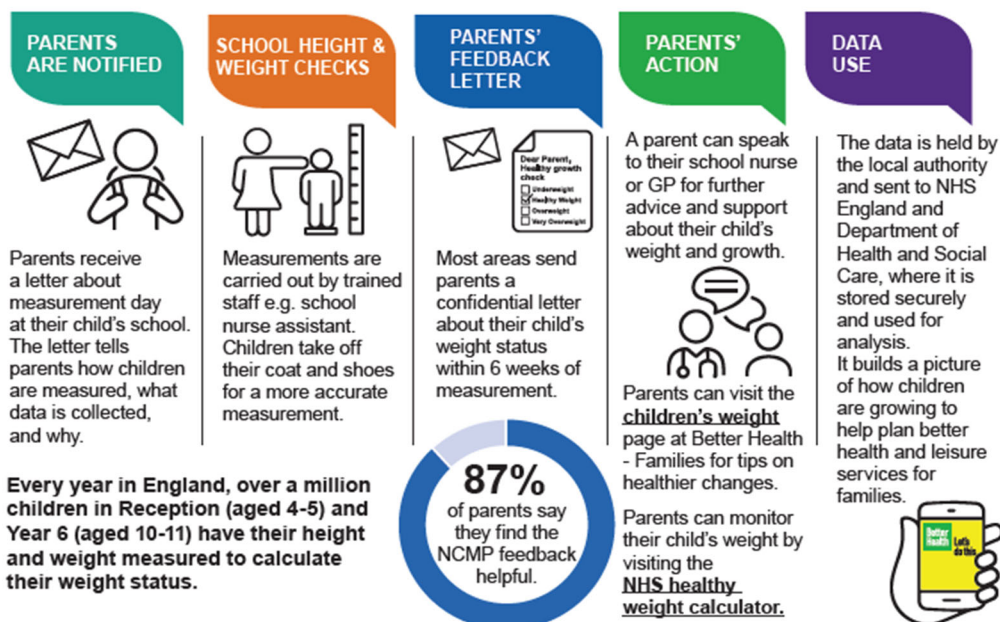
A handwritten signature in black ink, appearing to read 'Emma Austin'.

Emma Austin

School Nursing Clinical Lead, Coventry Family Health and Lifestyle Services

School height and weight measurements

Every year, throughout England, more than a million children in Reception and Year 6 have their height and weight measured at school as part of the National Child Measurement Programme



What we know from the data collected so far

- Most children in Reception and Year 6 are a healthy weight.
- Around one in ten children in Reception is very overweight. This doubles to one in five children by year 6.
- The number of very overweight children in Year 6 is increasing year on year
- Most children who are overweight in Reception will remain so or become even more overweight for their age by year 6 without action to achieve a healthier weight.

Because many children are overweight, we are all becoming used to seeing heavier children as the norm. It means we cannot always tell when a child is overweight. That is why many parents find it helpful to have an objective measurement of how their child is growing. More than 8 in 10 parents say this information is helpful and they can then make decisions about their child's lifestyle and wellbeing to make changes, or seek support if necessary.

Why achieving a healthy growth is important

When children are a healthy weight, they feel better about themselves. They find it easier to play and learn. And they are more likely to grow up healthy too. Helping them to be a healthier weight when they are a child can set up their health and wellbeing for life.

You can encourage the whole family to enjoy eating healthily and being active which will help your child achieve and maintain a healthier weight. Children who see their parents, grandparents and carers following a healthy and active lifestyle tend to join in and learn by example. These habits become a normal part of everyday life for the whole family.



© Crown copyright 2022
Department of Health and Social Care
This publication is licensed under the terms of the Open Government Licence v3.0 except where otherwise stated. To view this licence, visit nationalarchives.gov.uk/doc/open-government-licence/version/3 Where we have identified any third party copyright information you will need to obtain permission from the copyright holders concerned.

For more information on helping your family lead a healthy life, please turn over.